

The DFM TCS PC Quickstart

Eric Galayda (MDM Observatory)

2020Jan29

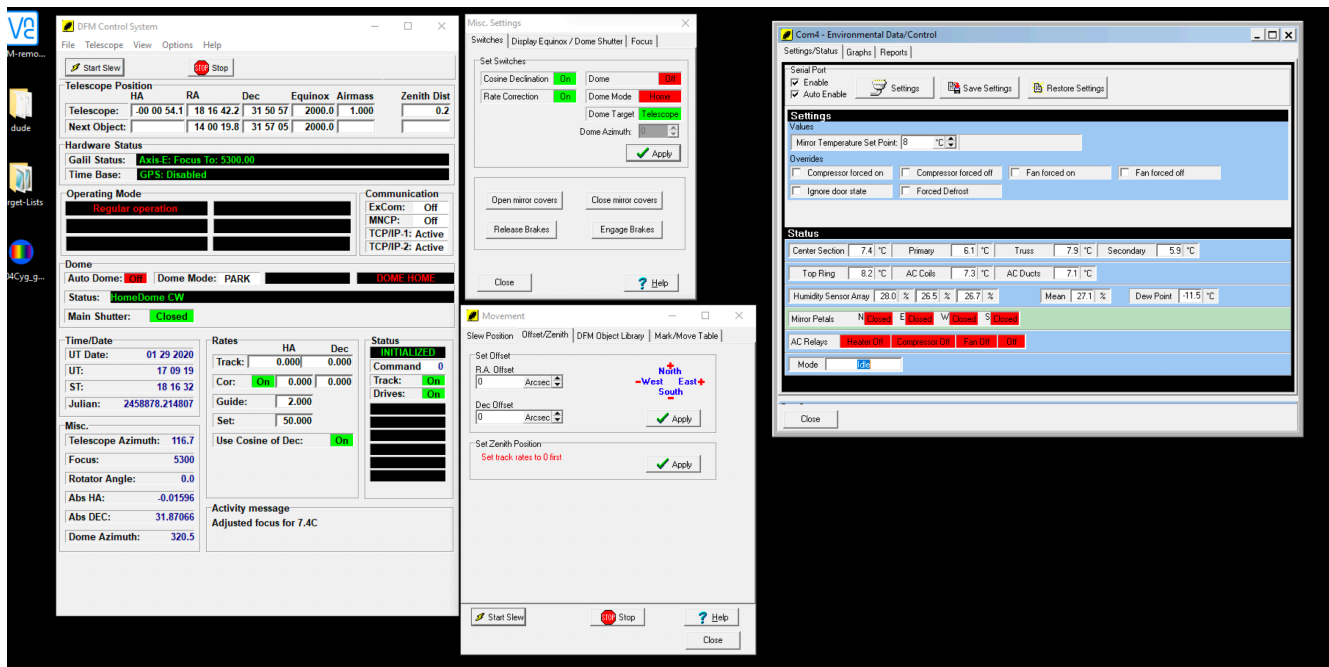
Being a Windows10 system, the DFM 2.4m TCS control PC will, on occasion, reboot after performing software updates. These typically happen around the noon hour so should not impact observations. However, it does mean an observer may awake to find the desktop on the control PC completely unpopulated. The intent here is to provide a quick startup list to get all TCS-related programs back online.

For a more thorough overview of starting up the TCS Control Systems, click [here](#).

● DFM Control System Software

- Double-click on the yellow icon labelled *TCS* to open the DFM Control System software. Wait for a moment as the software initializes.
- Once the software completes initialization, click *Telescope>Misc...* to open the popup containing the “Switches”, “Display Equinox/Dome Shutter” and “Focus” tabs.
- Click *Telescope>Movement* to open the popup containing tabs for issuing motion commands to the telescope.
- Click *Options>Environmental Data/Control...* to open the popup for primary mirror cooling control and system temperature metrics.

Once the control system software is up and running, it should look like this:




● Guider Control Software

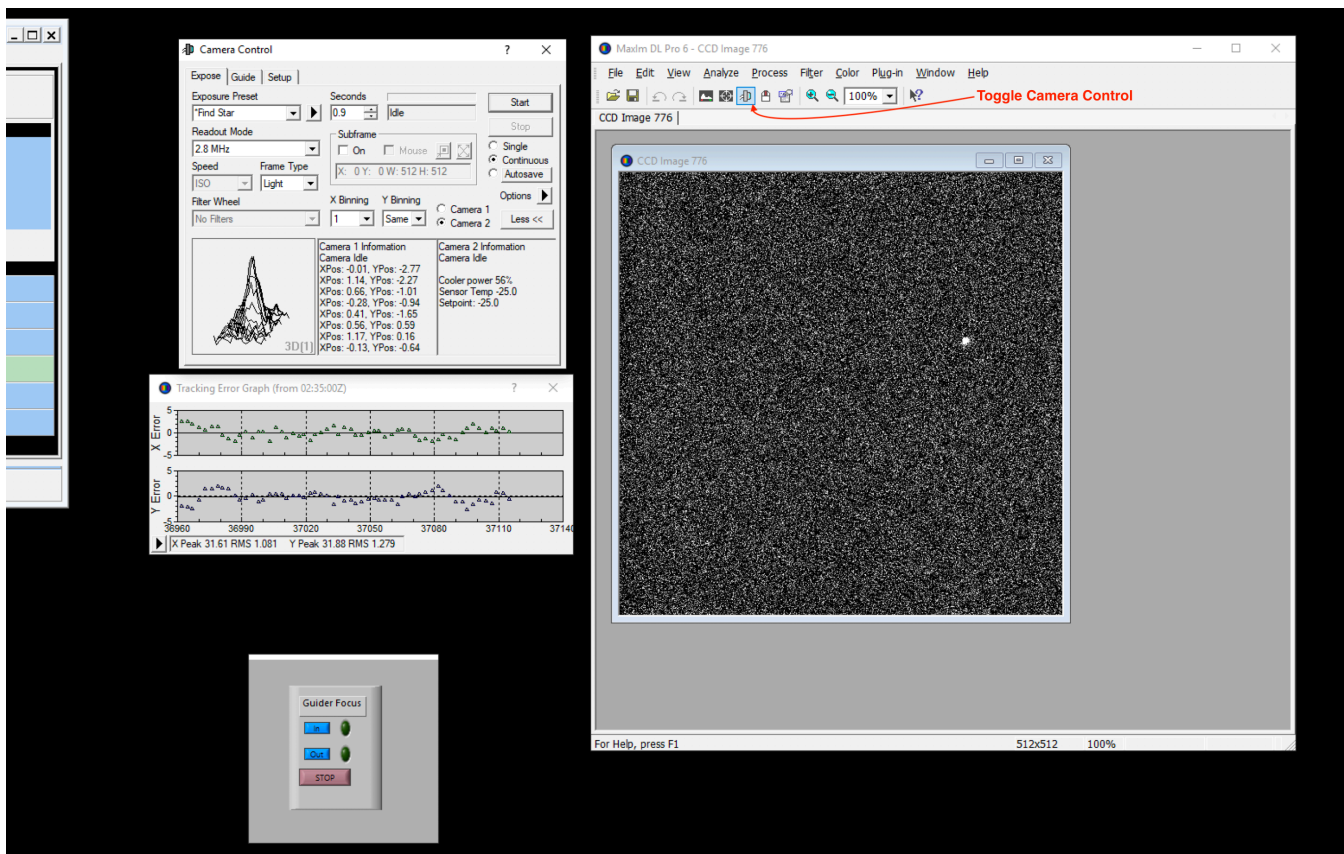
- Double-click on the icon labelled *Maxim DL 6* to open the guider software.
- If the “Camera Control” popup does not open, click the *Toggle Camera Control* icon (as seen below) to open it.

- In the Camera Control window, “Setup” tab:
 - Click *Connect*
 - Turn Coolers *On*
- In the Camera Control window, “Guide” tab:
 - Click the “Graph” button
 - Click the “Options” arrow and choose “Camera Settings...”
 - Click “Open Shutter” then click “OK” to close the popup window
- Click the “Settings” button to open the *Guider Settings* popup window
 - In the section labelled “Autoguider Output”, click on the “Setup” button. This opens the *ASCOM Telescope Chooser* popup window. Verify it lists “TCSGalilHybrid. Telescope” and click “OK” to close the window. Do NOT click the “Cancel” button or the guider may misbehave.
 - Click “OK” to close the *Guider Settings* popup window.

● Guider Focus Software

- Double-click on the icon labelled *Guider_Foc...* to open the guider focus GUI.
- Once the GUI opens, click the red *STOP* button so that the GUI can be repositioned closer to the guider software.
- Once positioned, click the  symbol to restart the program. Resize the GUI box if desired.

Once the guider system software is all up and running, it should look like this:



Done!